



Count on it.

Parts Catalog

**8-Blade Radial Reel DPA Cutting
Unit with 7in Reel**

Reelmaster® 5010-H Series Traction Unit

Model No. 03638—Serial No. 401420001 and Up



Ordering Replacement Parts

To order replacement parts, please supply the part number, the quantity, and the description of each part desired.

Understanding Reference Numbers

Each identified part in an illustration has a reference number. The reference number for a part also appears in the parts list, along with other information about the part.

This catalog uses two special reference number formats, one to indicate parts in a service assembly and another to indicate the quantity of a given part in an illustration.

Service Assembly Reference Numbers

Parts in service assemblies have reference numbers in the form a:b. The a represents the reference number of the entire service assembly and the b represents a sequential number unique to each part within the service assembly.

For example, a wheel assembly might be identified by reference number 6, the tire by 6:1, the valve by 6:2, and the wheel by 6:3. When you order the assembly identified by reference number 6, you receive all parts identified by reference numbers 6:1, 6:2, and 6:3. However, you may also order any part individually. Reference numbers of this type appear in illustration and in parts lists.

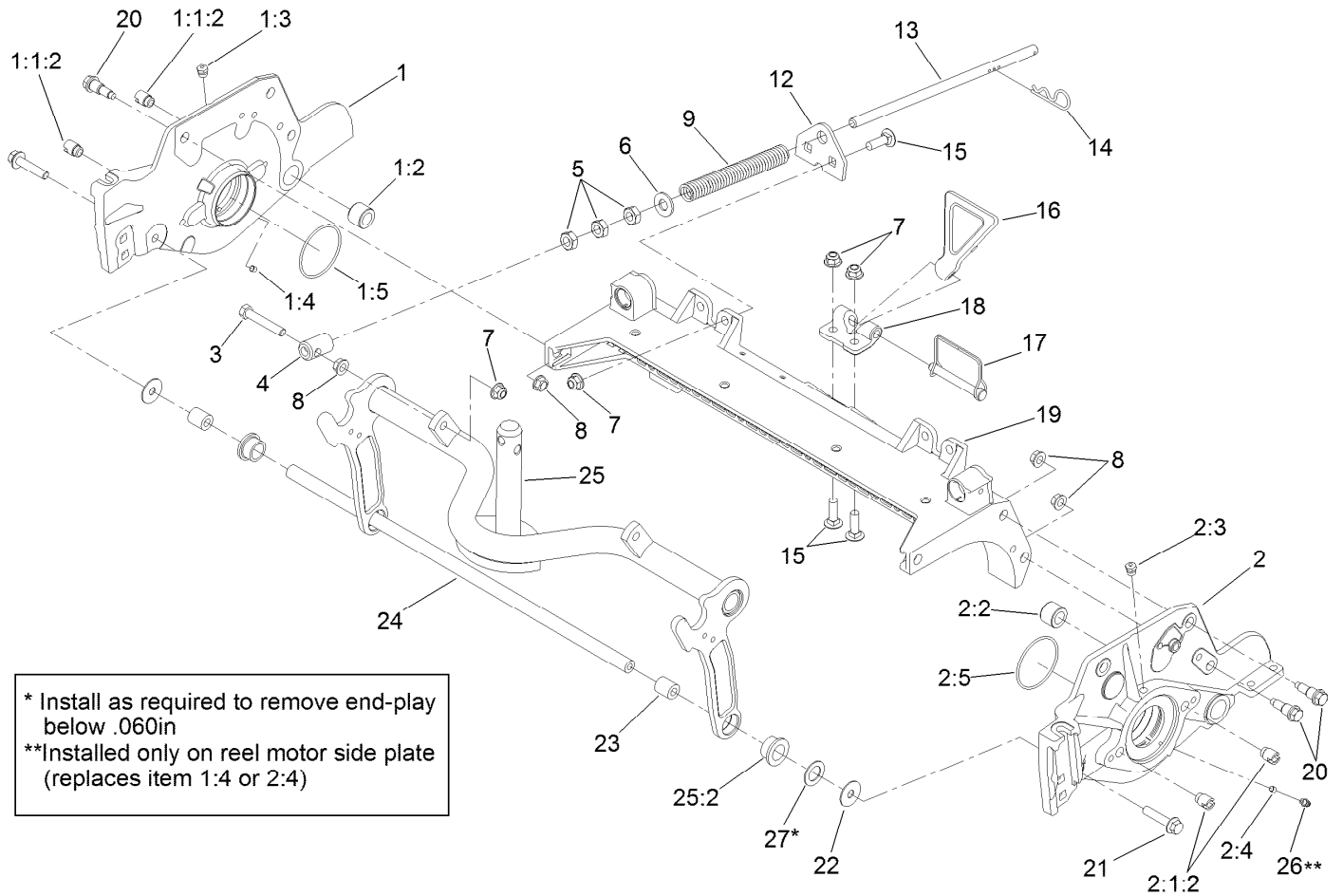
Reference Numbers Indicating Quantity

In an illustration, if a reference number indicates more than one part, the reference number has the form nX y. The n represents the quantity of the part, the X is the multiplication symbol, and the y represents the reference number.

For example, in an illustration, the reference number 2X 37 means that two of the parts identified by reference number 37 are indicated.

Contents

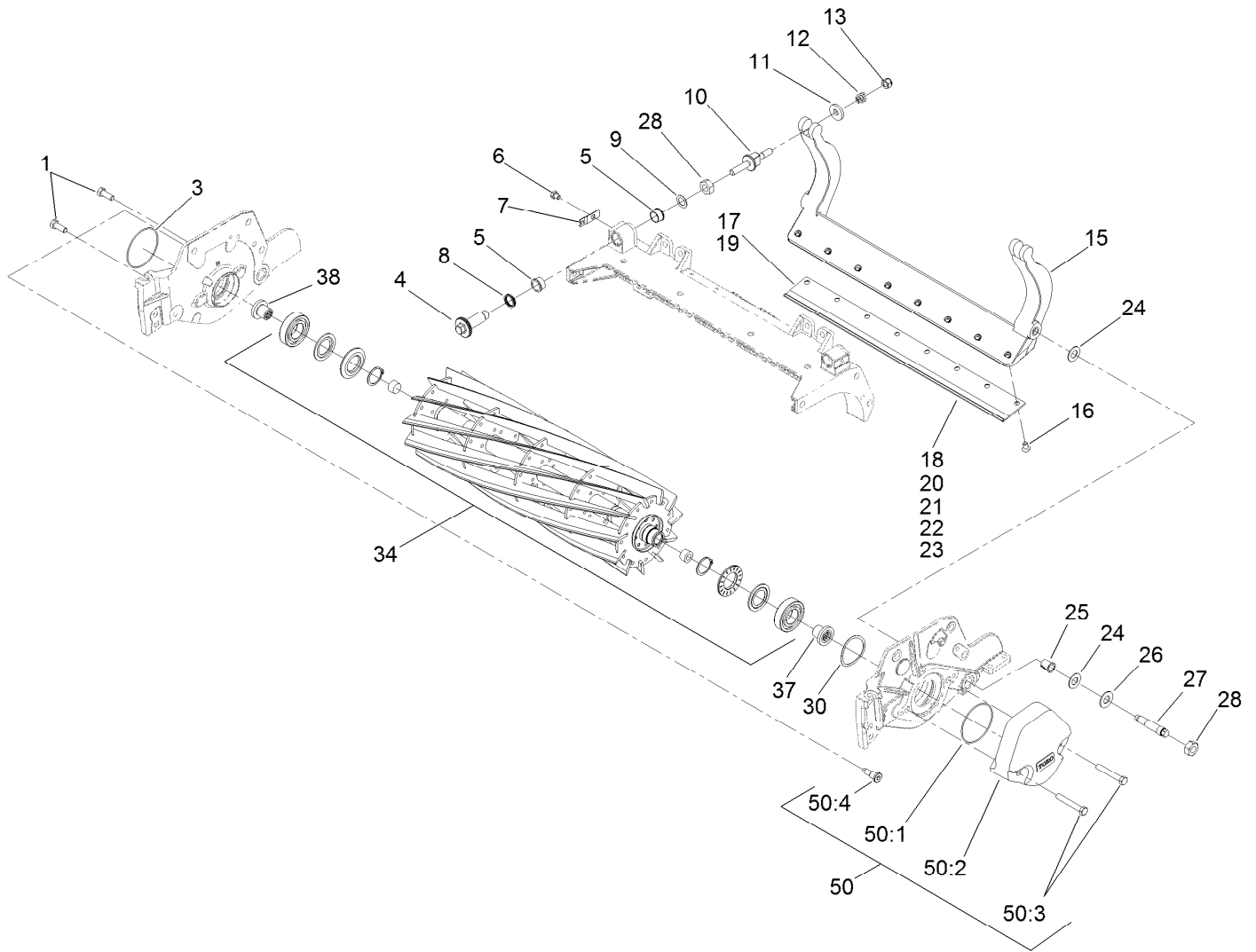
| | |
|---|----|
| Frame Assembly..... | 4 |
| Reel and Bedbar Assembly | 5 |
| Optional 7in EDGESERIES + 22In Fairway, 5 Blade Radial Reel Assembly No. 137-8444 | 7 |
| 7in EDGESERIES + 22In Fairway, 8 Blade, Low Drag, Radial Reel Assembly No. 137-8445 | 8 |
| Optional Heavy-Duty MVP Kit No. 120-7230..... | 9 |
| Roller Assembly | 10 |
| 3 Inch Diameter Long Roller Assembly No. 114-5415 | 11 |
| Optional 3 Inch Diameter Short Roller Assembly No. 114-5417 | 12 |
| Plastic Wiehle Roller Assembly No. 112-1704..... | 13 |
| Optional Full Front Roller Assembly No. 114-5412..... | 14 |
| Optional Plastic Shoulder Roller Assembly No. 114-5421 | 15 |
| Optional High Height-of-Cut Assembly No. 137-0890 | 16 |
| Shield Assembly..... | 17 |
| Optional Tools Assembly..... | 18 |
| Attachments and Accessories | 19 |



Frame Assembly

| Ref. | Part Number | Qty. | Description | Ref. | Part Number | Qty. | Description |
|-------|-------------|------|-----------------------------|------|-------------|------|--------------------|
| 1 | 127-4298 | 1 | 7 Inch RH Side Plate ASM | 9 | 110-4079 | 1 | Spring-Compression |
| 1:1:2 | 127-7149 | 2 | Insert-Threaded, Side Plate | 12 | 110-4069 | 1 | Bracket |
| 1:2 | 106-9618 | 1 | Bushing-Rubber | 13 | 115-2007 | 1 | Rod-Spring |
| 1:3 | 302-39 | 1 | Fitting-Plug | 14 | 92-2762 | 1 | Pin-Hair |
| 1:4 | 3245-35 | 1 | Screw-Set, HSH | 15 | 3231-25 | 4 | Bolt-CARR |
| 1:5 | 117-8177 | 1 | O-Ring | 16 | 119-8010-03 | 1 | Kickstand ● |
| 2 | 127-4295 | 1 | 7 Inch LH Side Plate ASM | 17 | 107-7400 | 1 | Pin-Lynch |
| 2:1:2 | 127-7149 | 2 | Insert-Threaded, Side Plate | 18 | 110-4058 | 1 | Bracket-Chain |
| 2:2 | 106-9618 | 1 | Bushing-Rubber | 19 | 107-3258 | 1 | Frame |
| 2:3 | 302-39 | 1 | Fitting-Plug | 20 | 107-2979 | 6 | Bolt-Shoulder |
| 2:4 | 3245-35 | 1 | Screw-Set, HSH | 21 | 3234-19 | 2 | Screw-HHF |
| 2:5 | 117-8177 | 1 | O-Ring | 22 | 130-8094 | 2 | Washer-Plain |
| 3 | 104-3396 | 1 | Screw-HH | 23 | 108-4279 | 2 | Spacer-Frame |
| 4 | 99-8662 | 1 | Tube-Spring | 24 | 108-4284 | 1 | Tube-Support |
| 5 | 3218-5 | 3 | Nut-Jam | 25 | 107-7433 | 1 | Carrier Frame ASM |
| 6 | 87-7270 | 1 | Washer-Thrust | 25:2 | 93-2877 | 2 | Bushing |
| 7 | 104-8301 | 5 | Nut-HF, NI | 26 | 302-5 | 1 | Fitting-Grease |
| 8 | 3290-357 | 7 | Nut-HHF, Whiz | 27 | 67-9410 | 1 | Washer |

● Optional Equipment

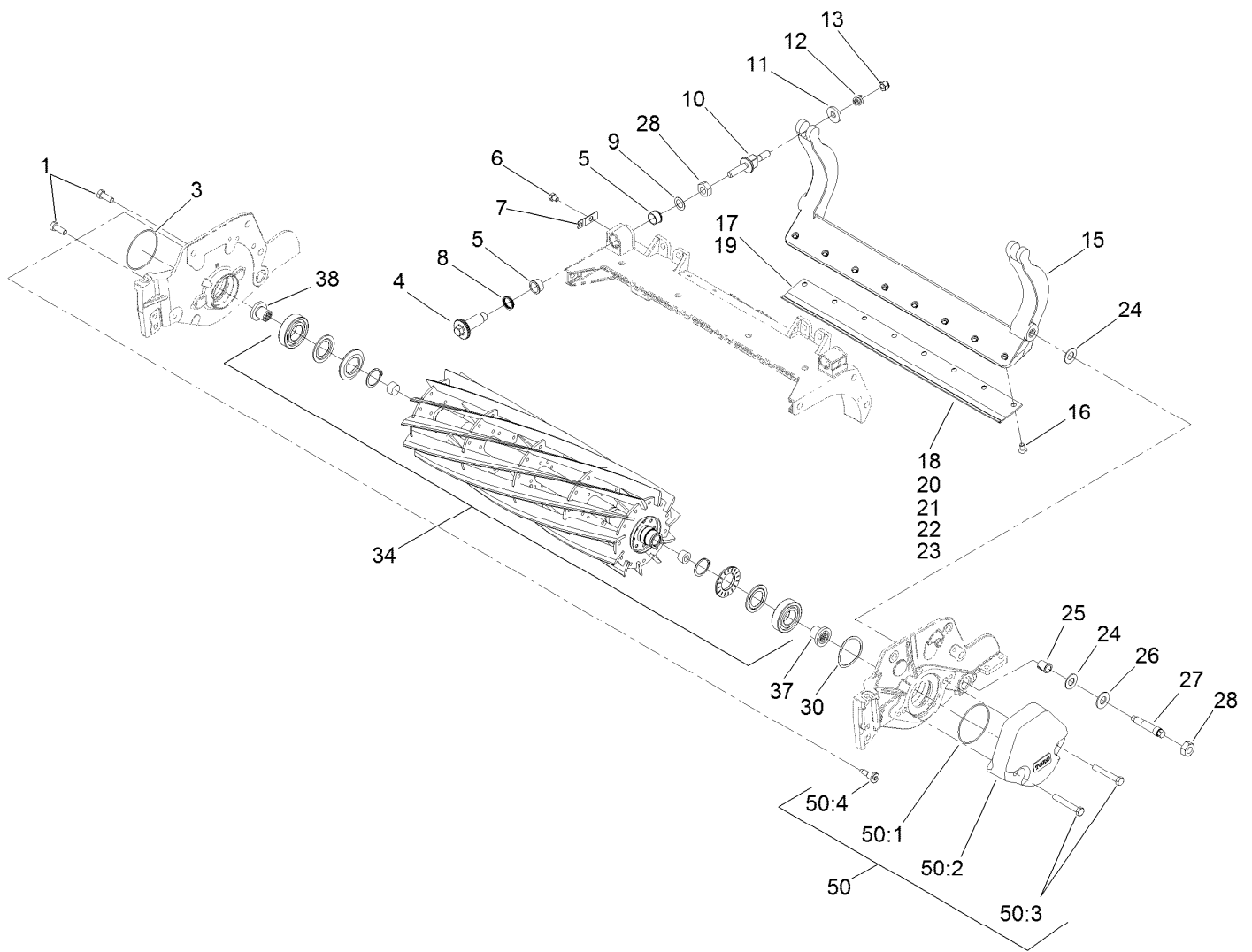


Reel and Bedbar Assembly

| Ref. | Part Number | Qty. | Description | Ref. | Part Number | Qty. | Description |
|------|-------------|------|-------------------------------|------|-------------|------|--|
| 1 | 323-6 | 2 | Screw-HH | 18 | 108-9096 | 1 | Bedknife-STD (Fairway) ■ |
| 3 | 112-6967 | 1 | O-Ring | 19 | 137-0832 | 1 | Bedknife-Edgemax Lowcut ■ |
| 4 | 120-5118 | 2 | Shaft-Adjuster | 20 | 110-4084 | 1 | Bedknife-Low HOC (Fairway) ■ |
| 5 | 106-5344 | 4 | Bushing-Flange, Keyed | 21 | 119-4280 | 1 | Bedknife-Edgemax Extended Low HOC, Fairw ■ |
| 6 | 119-4067 | 2 | Screw-HH | 22 | 120-1640 | 1 | Bedknife-Low HOC Extended, Fairway ■ |
| 7 | 99-2097 | 2 | Detent | 23 | 110-4074 | 1 | Bedknife-HD (Fairway) ■ |
| 8 | 120-5116 | 2 | Washer-Wave | 24 | 61-1950 | 4 | Washer-Plastic |
| 9 | 108-0015 | 2 | Washer-Flat | 25 | 56-9520 | 2 | Bushing-Flanged |
| 10 | 115-7039 | 2 | Screw-Adjuster, Bedbar | 26 | 69-8980 | 2 | Washer |
| 11 | 119-4155 | 2 | Washer-Hardened | 27 | 106-9623 | 2 | Bolt-Bedbar |
| 12 | 120-5120 | 2 | Spring-Compression | 28 | 3296-33 | 4 | Nut-Lock, NI |
| 13 | 119-4039 | 2 | Nut-Hex, NI | 30 | 115-5258 | 1 | Spring-Wire, Flat |
| 15 | 107-3273-01 | 1 | Bedbar | | | | |
| 15 | 131-3221-03 | 1 | Bedbar-Aggressive, 7 Inch ● ■ | | | | |
| 16 | 119-4151 | 8 | Screw-Bedknife | | | | |
| 17 | 137-0833 | 1 | Bedknife-Edgemax (Fairway) | | | | |

● Not illustrated

■ Optional Equipment

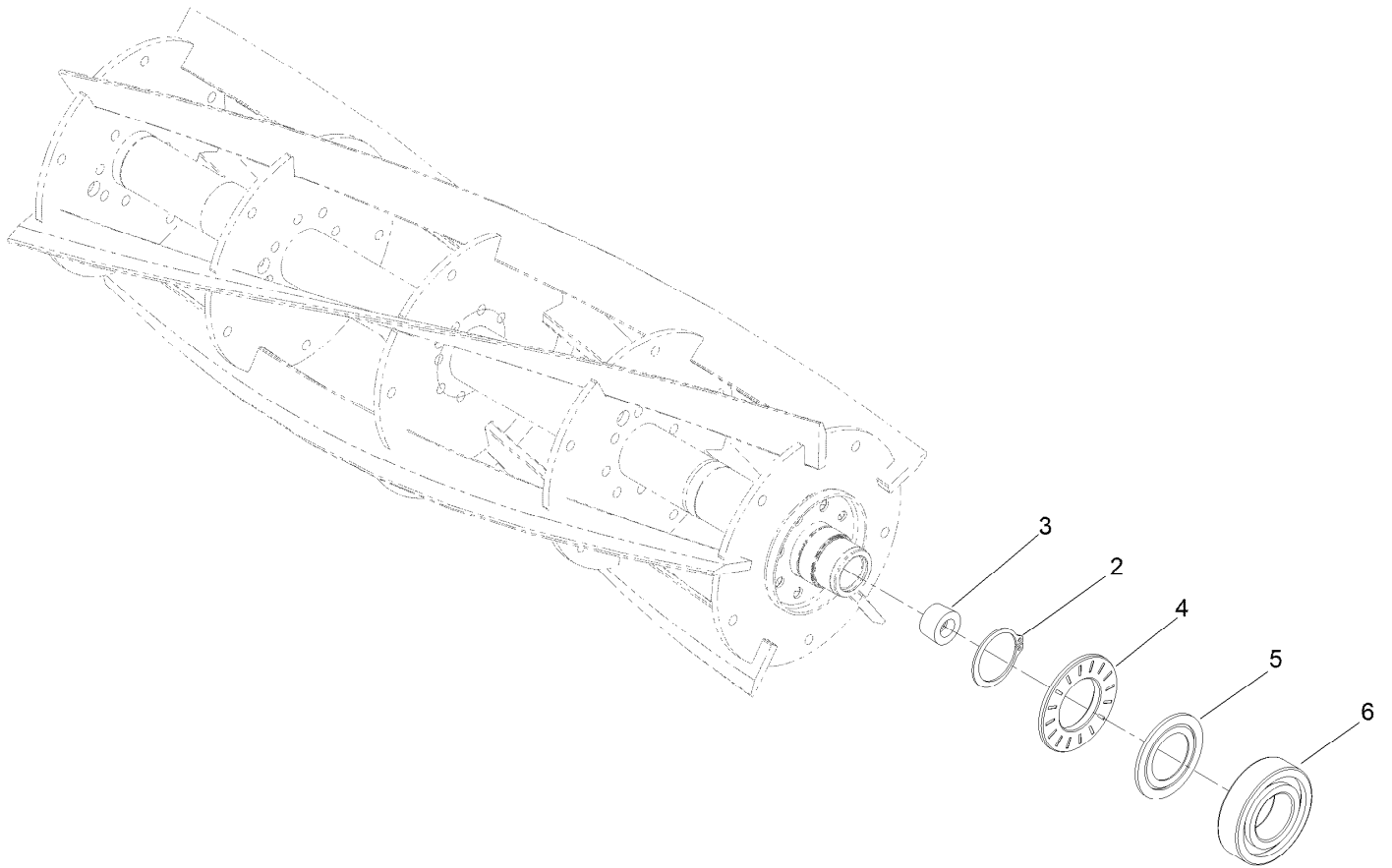


Reel and Bedbar Assembly (continued)

| Ref. | Part Number | Qty. | Description | Ref. | Part Number | Qty. | Description |
|------|-------------|------|--|------|-------------|------|-------------------------------------|
| 34 | 137-8444 | 1 | Edge Series Reel+ 7In Fairway(22In)5 Blade Low Drag (Radialreel) ■ | 45 | 120-7230 | 1 | HD DPA MVP Kit ● ■ |
| 34 | 137-8445 | 1 | Edge Series Reel+ 7In Fairway(22In)8 Blade Low Drag (Radialreel) | 50 | 127-7129 | 1 | Weight Kit ■ |
| 37 | 127-7111 | 1 | Insert-Threaded, 7 Inch (LH) | 50:1 | 112-6967 | 5 | O-Ring |
| 38 | 127-7109 | 1 | Insert-Threaded, 7 Inch (RH) | 50:2 | 108-4269-01 | 5 | Weight |
| | | | | 50:3 | 323-12 | 10 | Screw-HH |
| | | | | 50:4 | 127-7122 | 5 | Bolt-Shoulder, Flange Hex Socket |

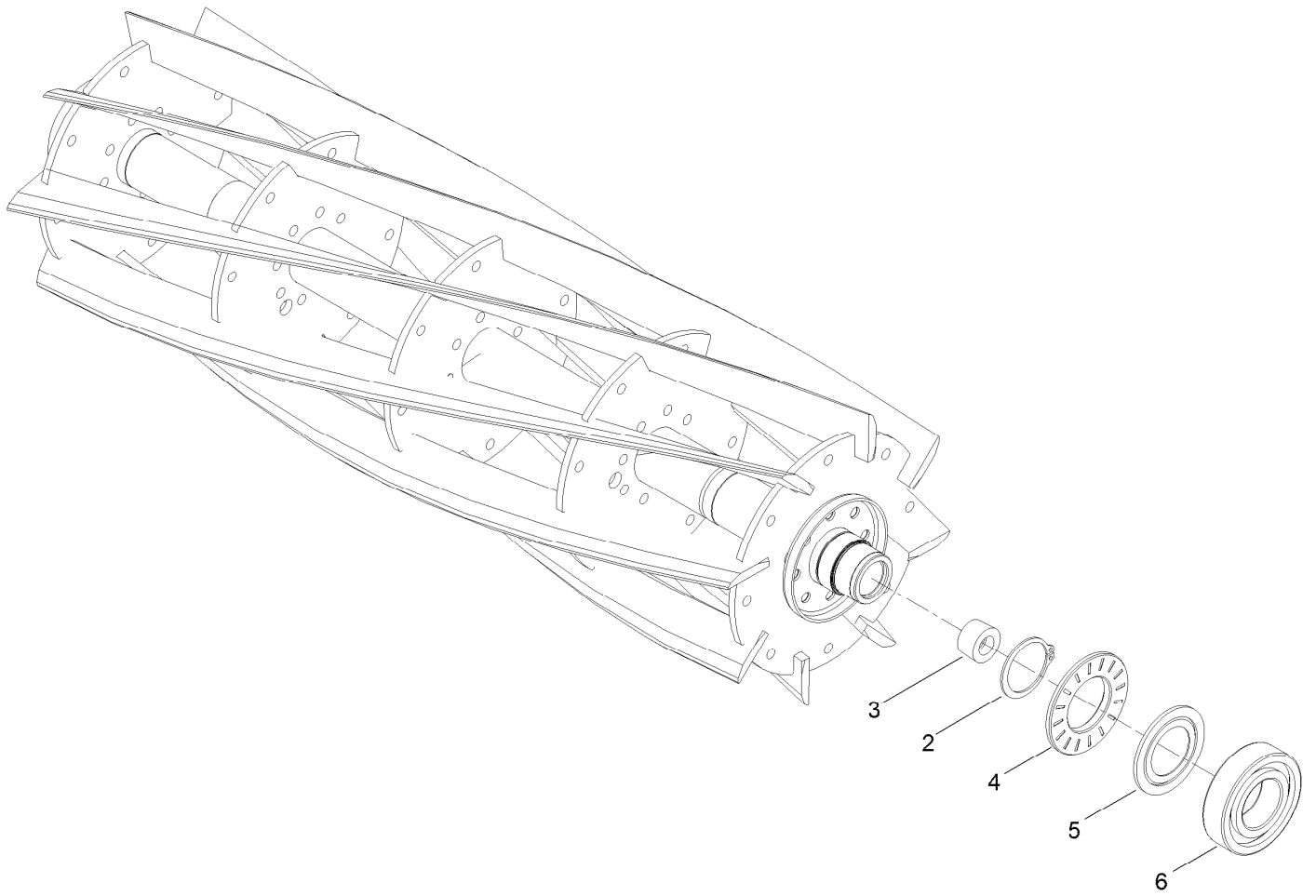
● Not illustrated

■ Optional Equipment



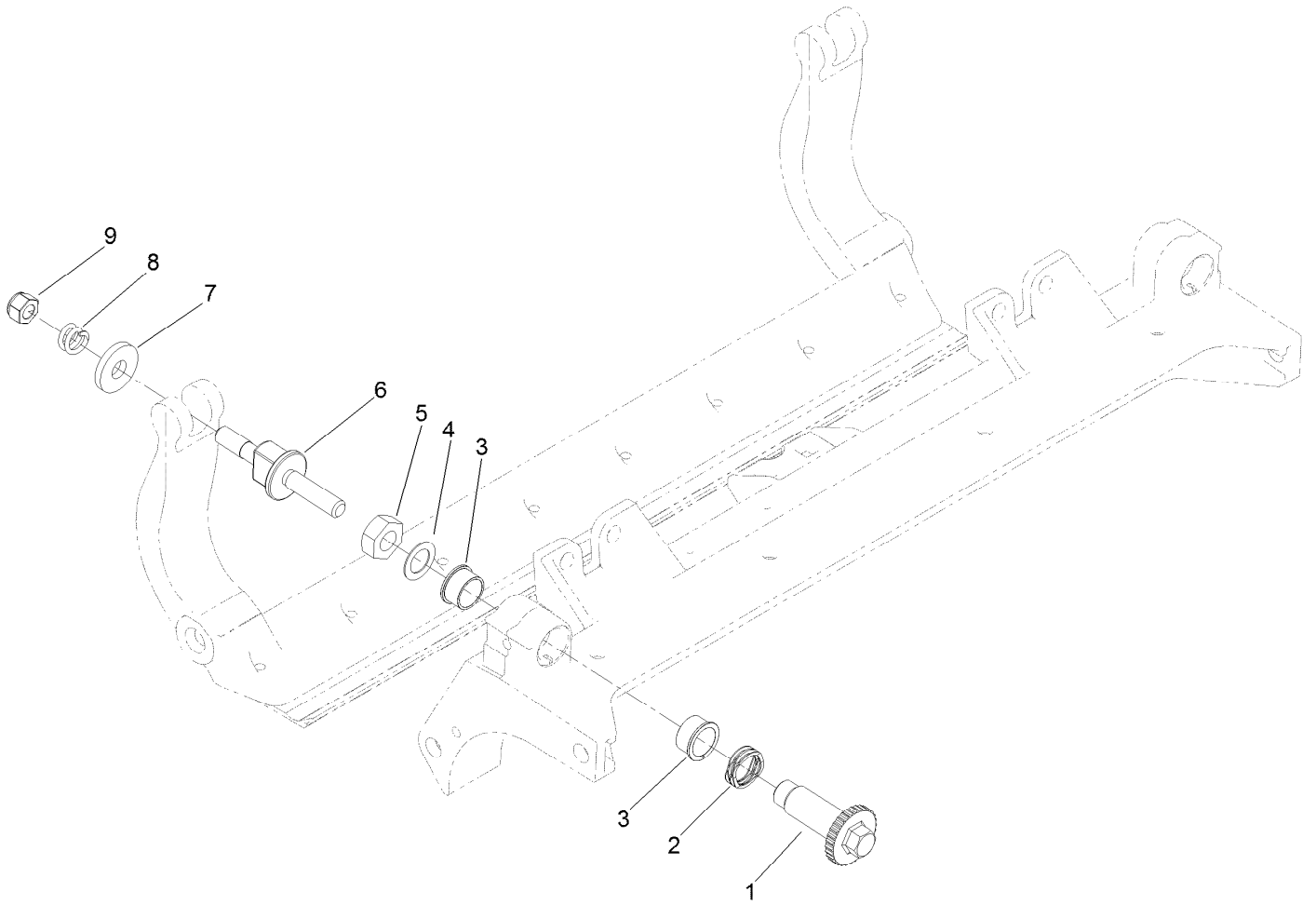
Optional 7in EDGESERIES + 22In Fairway, 5 Blade Radial Reel Assembly No. 137-8444

| <i>Ref.</i> | <i>Part Number</i> | <i>Qty.</i> | <i>Description</i> |
|-------------|--------------------|-------------|--------------------|
| 2 | 92-2601 | 2 | Ring-Retaining |
| 3 | 127-7118 | 2 | Plug-Shaft, Reel |
| 4 | 127-4284 | 2 | Washer-Special |
| 5 | 115-3299 | 2 | Seal-Flocked |
| 6 | 115-3296 | 2 | Bearing-Sealed |



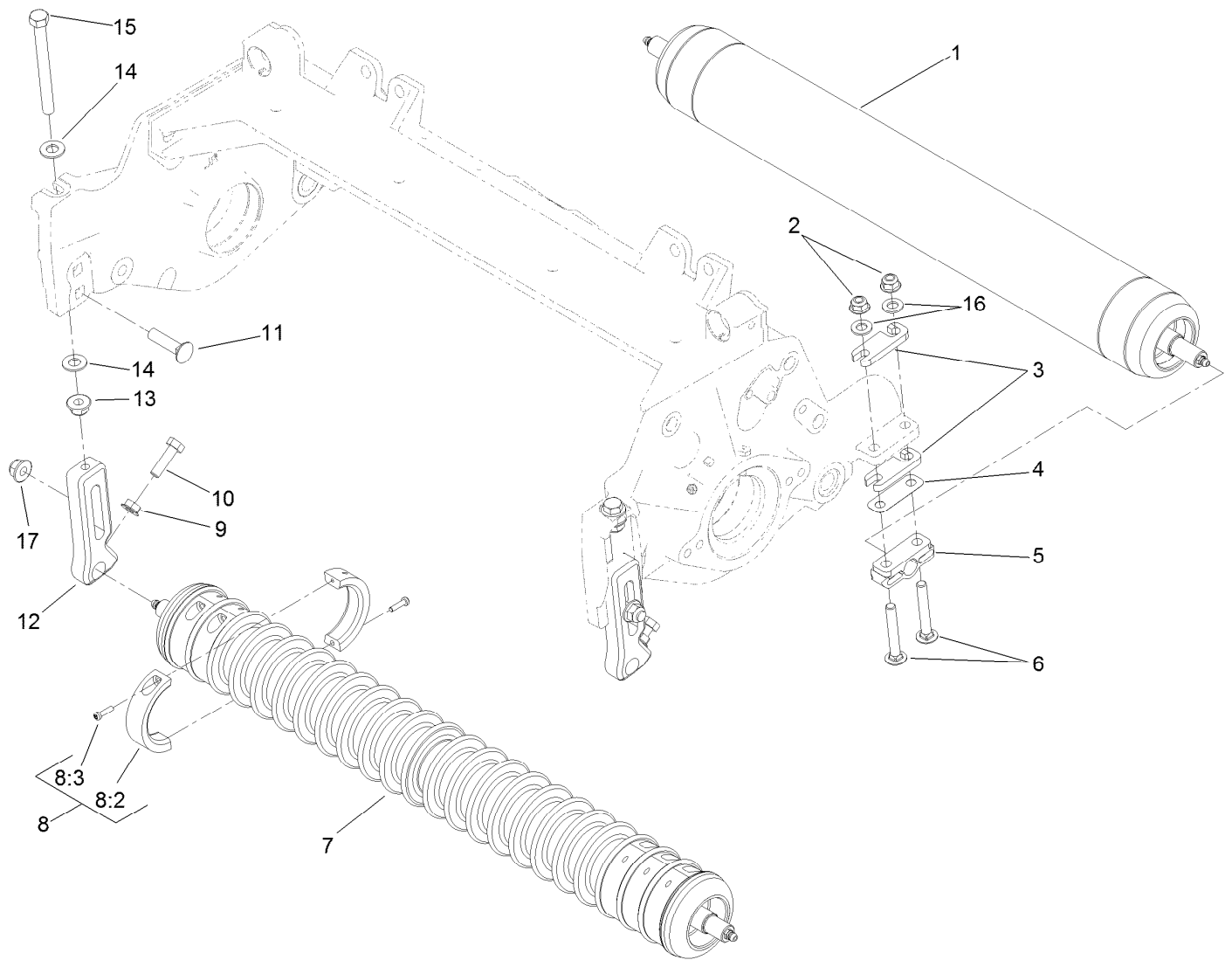
7in EDGESERIES + 22In Fairway, 8 Blade, Low Drag, Radial Reel Assembly No. 137-8445

| <i>Ref.</i> | <i>Part Number</i> | <i>Qty.</i> | <i>Description</i> |
|-------------|--------------------|-------------|--------------------|
| 2 | 92-2601 | 2 | Ring-Retaining |
| 3 | 127-7118 | 2 | Plug-Shaft, Reel |
| 4 | 127-4284 | 2 | Washer-Special |
| 5 | 115-3299 | 2 | Seal-Flocked |
| 6 | 115-3296 | 2 | Bearing-Sealed |



Optional Heavy-Duty MVP Kit No. 120-7230

| <i>Ref.</i> | <i>Part Number</i> | <i>Qty.</i> | <i>Description</i> |
|-------------|--------------------|-------------|------------------------|
| 1 | 120-5118 | 2 | Shaft-Adjuster |
| 2 | 120-5116 | 2 | Washer-Wave |
| 3 | 106-5344 | 4 | Bushing-Flange, Keyed |
| 4 | 108-0015 | 2 | Washer-Flat |
| 5 | 3296-33 | 2 | Nut-Lock, NI |
| 6 | 115-7039 | 2 | Screw-Adjuster, Bedbar |
| 7 | 119-4155 | 2 | Washer-Hardened |
| 8 | 120-5120 | 2 | Spring-Compression |
| 9 | 119-4039 | 2 | Nut-Hex, NI |

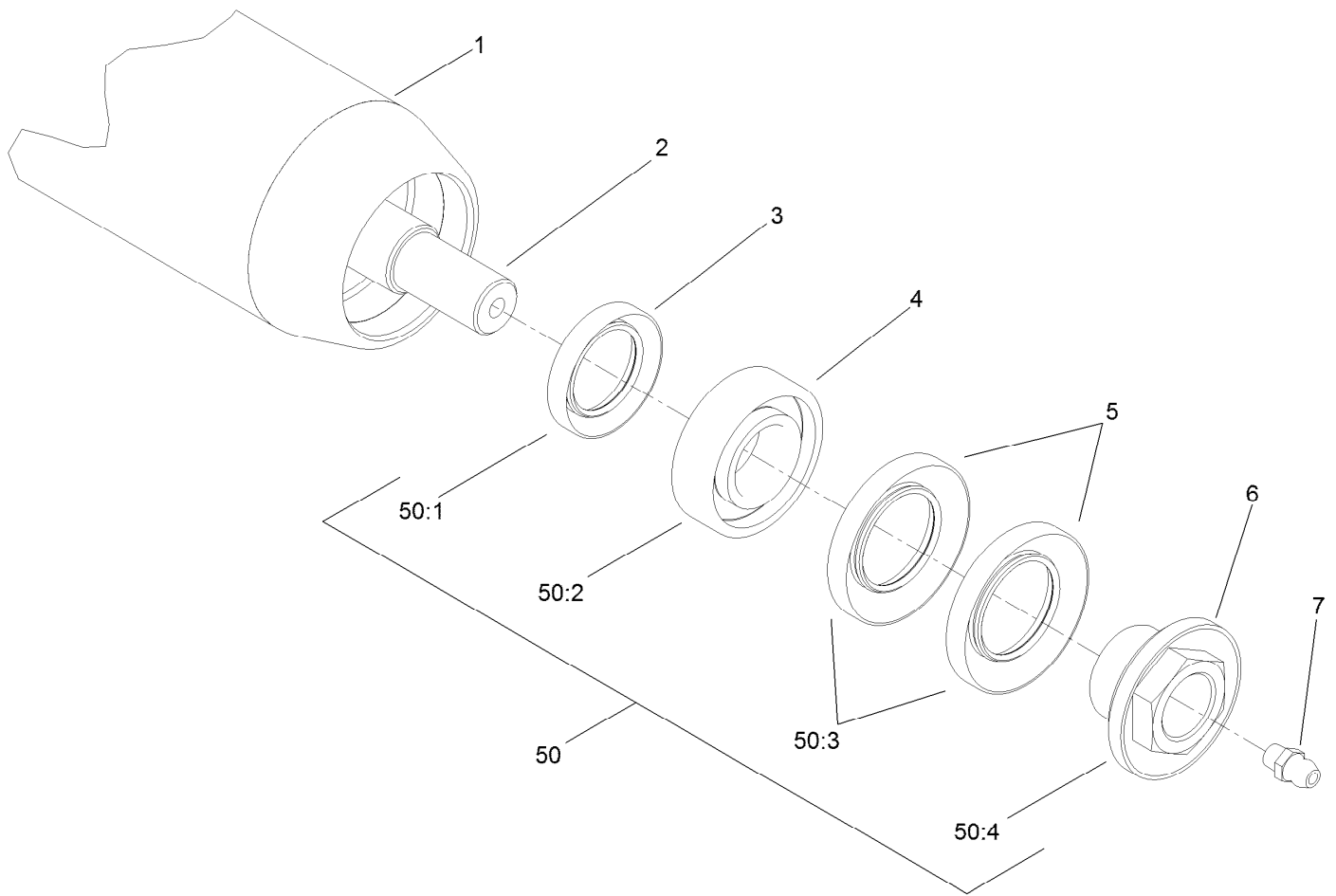


Roller Assembly

| Ref. | Part Number | Qty. | Description | Ref. | Part Number | Qty. | Description |
|------|-------------|------|-------------------------------------|------|-------------|------|---|
| 1 | 114-5415 | 1 | 3 Inch DIA Roller ASM (Long) | 8 | 104-8215 | 6 | Collar Kit ■ |
| 1 | 114-5417 | 1 | 3 Inch DIA Roller ASM (Short) ●■ | 8:2 | 100-4959 | 2 | Collar |
| 2 | 104-8300 | 4 | Nut-HF, NI | 8:3 | 104-1835 | 2 | Screw |
| 3 | 119-0626 | 8 | Shim-Roller | 9 | 32128-20 | 2 | Nut-HF |
| 4 | 107-4001 | 2 | Shim-Roller (0.01 Inch) ■ | 10 | 322-16 | 2 | Screw-HH |
| 5 | 106-3924 | 2 | Bracket-Roller, Rear | 11 | 3231-4 | 2 | Screw-CARR |
| 6 | 3230-26 | 4 | Screw-CARR | 12 | 125-2796 | 2 | Bracket-Front HOC |
| 7 | 114-5400 | 1 | Plastic Wiehle Roller ASM | 13 | 104-8301 | 2 | Nut-HF, NI |
| 7 | 114-5412 | 1 | 3 Inch DIA Full Front Roller ASM ●■ | 14 | 48-9220 | 4 | Washer-Plain |
| 7 | 114-5421 | 1 | Plastic Shoulder Roller ASM ●■ | 15 | 133-7571 | 2 | Screw-HOC Fwy |
| | | | | 16 | 94-6936 | 4 | Washer-Hardened |
| | | | | 17 | 133-7570 | 2 | Nut-Flange, NI |
| | | | | 50 | 137-0890 | 1 | High HOC Kit (Fwy And Trim DPA Cu's) ●■ |

● Not illustrated

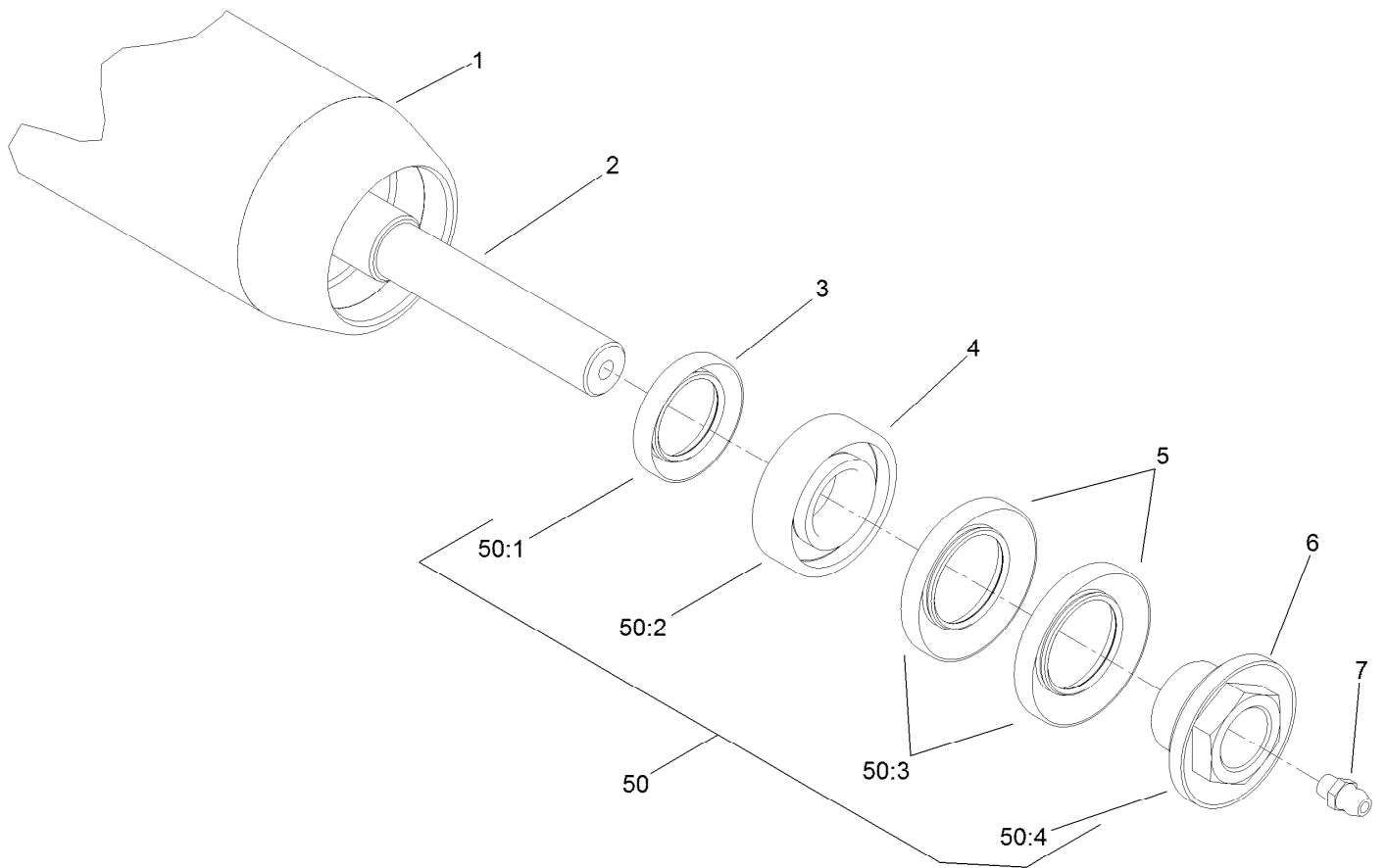
■ Optional Equipment



3 Inch Diameter Long Roller Assembly No. 114-5415

| <i>Ref.</i> | <i>Part Number</i> | <i>Qty.</i> | <i>Description</i> |
|-------------|--------------------|-------------|--------------------------|
| 1 | 115-8292-03 | 1 | Tube-Roller (Long) |
| 2 | 114-5407 | 1 | Shaft-Long, Rear Roller |
| 3 | 114-3717 | 2 | Seal-Oil |
| 4 | 112-5290 | 2 | Bearing-Steel, Stainless |
| 5 | 112-7494 | 4 | Seal |
| 6 | 114-5411 | 2 | Nut-Lock, Bearing |
| 7 | 302-5 | 2 | Fitting-Grease |
| 50 | 114-5430 | 1 | Roller Rebuild Kit ● |
| 50:1 | 114-3717 | 2 | Seal-Oil |
| 50:2 | 112-5290 | 2 | Bearing-Steel, Stainless |
| 50:3 | 112-7494 | 4 | Seal |
| 50:4 | 114-3745 | 2 | Nut-Lock, Bearing |

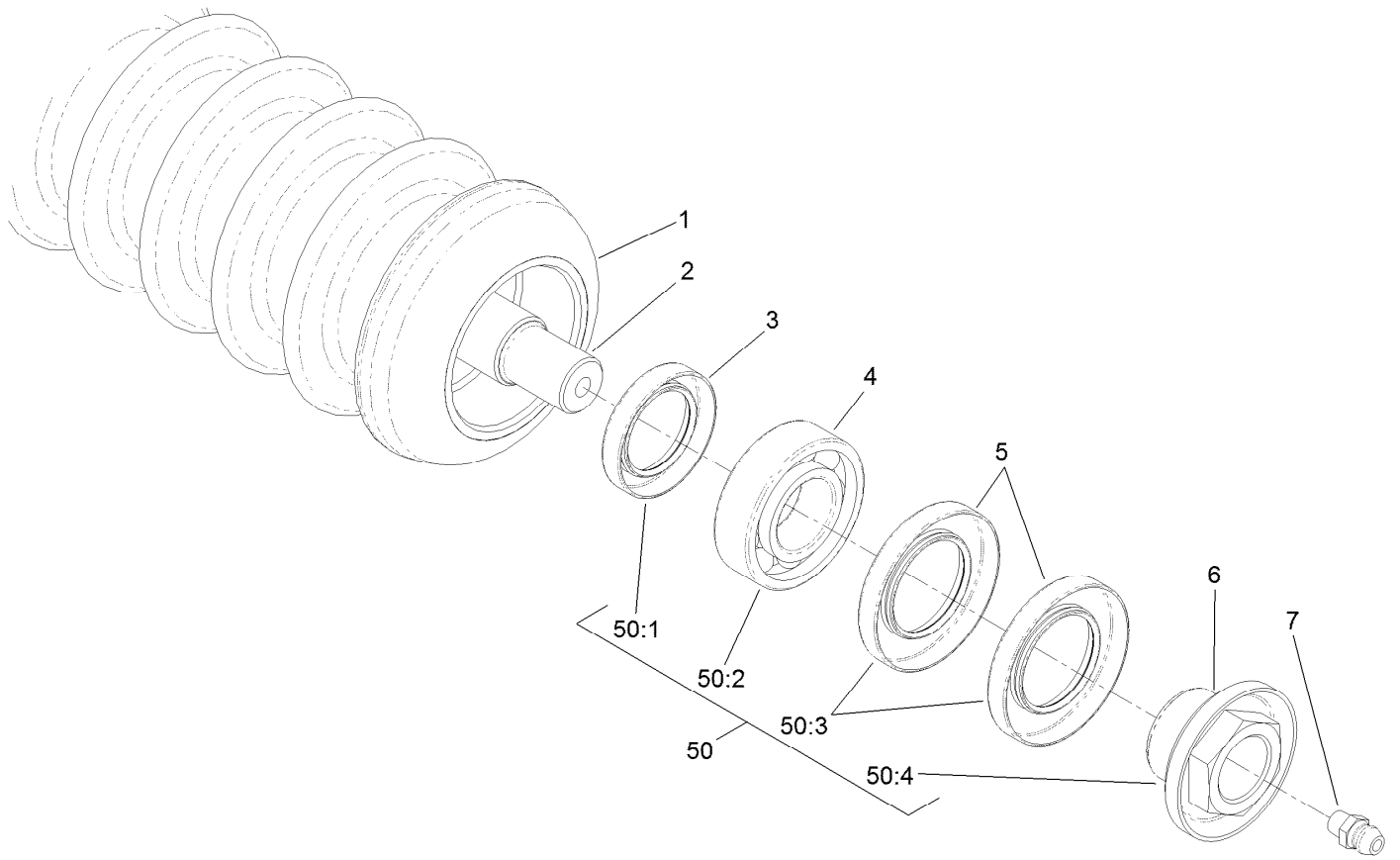
● Optional Equipment



Optional 3 Inch Diameter Short Roller Assembly No. 114-5417

| <i>Ref.</i> | <i>Part Number</i> | <i>Qty.</i> | <i>Description</i> |
|-------------|--------------------|-------------|--------------------------|
| 1 | 115-8296-03 | 1 | Tube-Roller (Short) |
| 2 | 114-5410 | 1 | Shaft-Short, Rear Roller |
| 3 | 114-3717 | 2 | Seal-Oil |
| 4 | 112-5290 | 2 | Bearing-Steel, Stainless |
| 5 | 112-7494 | 4 | Seal |
| 6 | 114-5411 | 2 | Nut-Lock, Bearing |
| 7 | 302-5 | 2 | Fitting-Grease |
| 50 | 114-5430 | 1 | Roller Rebuild Kit ● |
| 50:1 | 114-3717 | 2 | Seal-Oil |
| 50:2 | 112-5290 | 2 | Bearing-Steel, Stainless |
| 50:3 | 112-7494 | 4 | Seal |
| 50:4 | 114-3745 | 2 | Nut-Lock, Bearing |

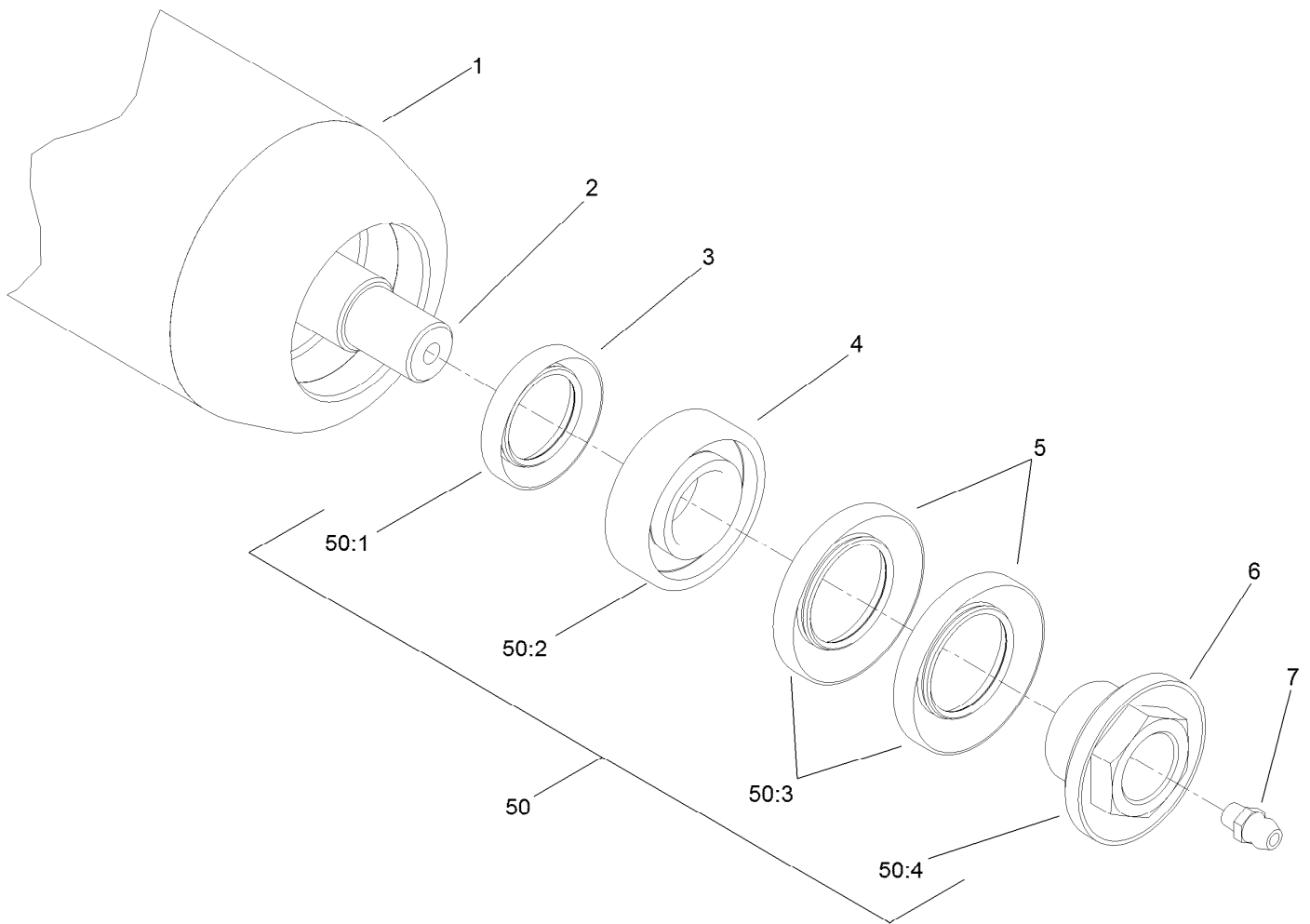
● Optional Equipment



Plastic Wiehle Roller Assembly No. 112-1704

| <i>Ref.</i> | <i>Part Number</i> | <i>Qty.</i> | <i>Description</i> |
|-------------|--------------------|-------------|--------------------------|
| 1 | 114-5401 | 1 | Roller-Wiehle, Plastic |
| 2 | 114-5403 | 1 | Shaft-Roller, Front |
| 3 | 114-3717 | 2 | Seal-Oil |
| 4 | 112-5290 | 2 | Bearing-Steel, Stainless |
| 5 | 112-7494 | 4 | Seal |
| 6 | 114-5411 | 2 | Nut-Lock, Bearing |
| 7 | 302-5 | 2 | Fitting-Grease |
| 50 | 114-5430 | 1 | Roller Rebuild Kit ● |
| 50:1 | 114-3717 | 2 | Seal-Oil |
| 50:2 | 112-5290 | 2 | Bearing-Steel, Stainless |
| 50:3 | 112-7494 | 4 | Seal |
| 50:4 | 114-3745 | 2 | Nut-Lock, Bearing |

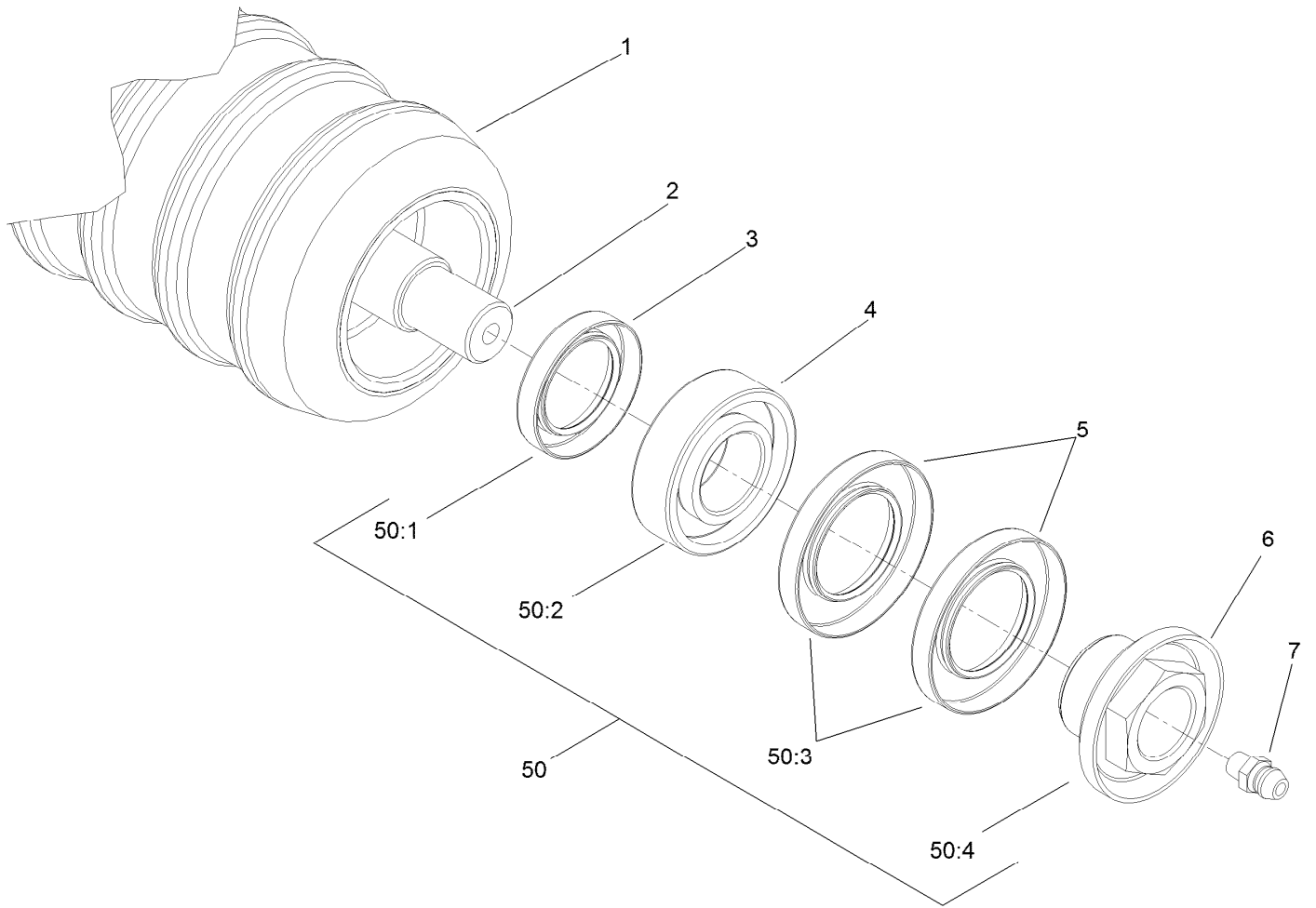
● Optional Equipment



Optional Full Front Roller Assembly No. 114-5412

| <i>Ref.</i> | <i>Part Number</i> | <i>Qty.</i> | <i>Description</i> |
|-------------|--------------------|-------------|--------------------------|
| 1 | 115-8297-03 | 1 | Tube-Roller, Full |
| 2 | 114-5403 | 1 | Shaft-Roller, Front |
| 3 | 114-3717 | 2 | Seal-Oil |
| 4 | 112-5290 | 2 | Bearing-Steel, Stainless |
| 5 | 112-7494 | 4 | Seal |
| 6 | 114-5411 | 2 | Nut-Lock, Bearing |
| 7 | 302-5 | 2 | Fitting-Grease |
| 50 | 114-5430 | 1 | Roller Rebuild Kit ● |
| 50:1 | 114-3717 | 2 | Seal-Oil |
| 50:2 | 112-5290 | 2 | Bearing-Steel, Stainless |
| 50:3 | 112-7494 | 4 | Seal |
| 50:4 | 114-3745 | 2 | Nut-Lock, Bearing |

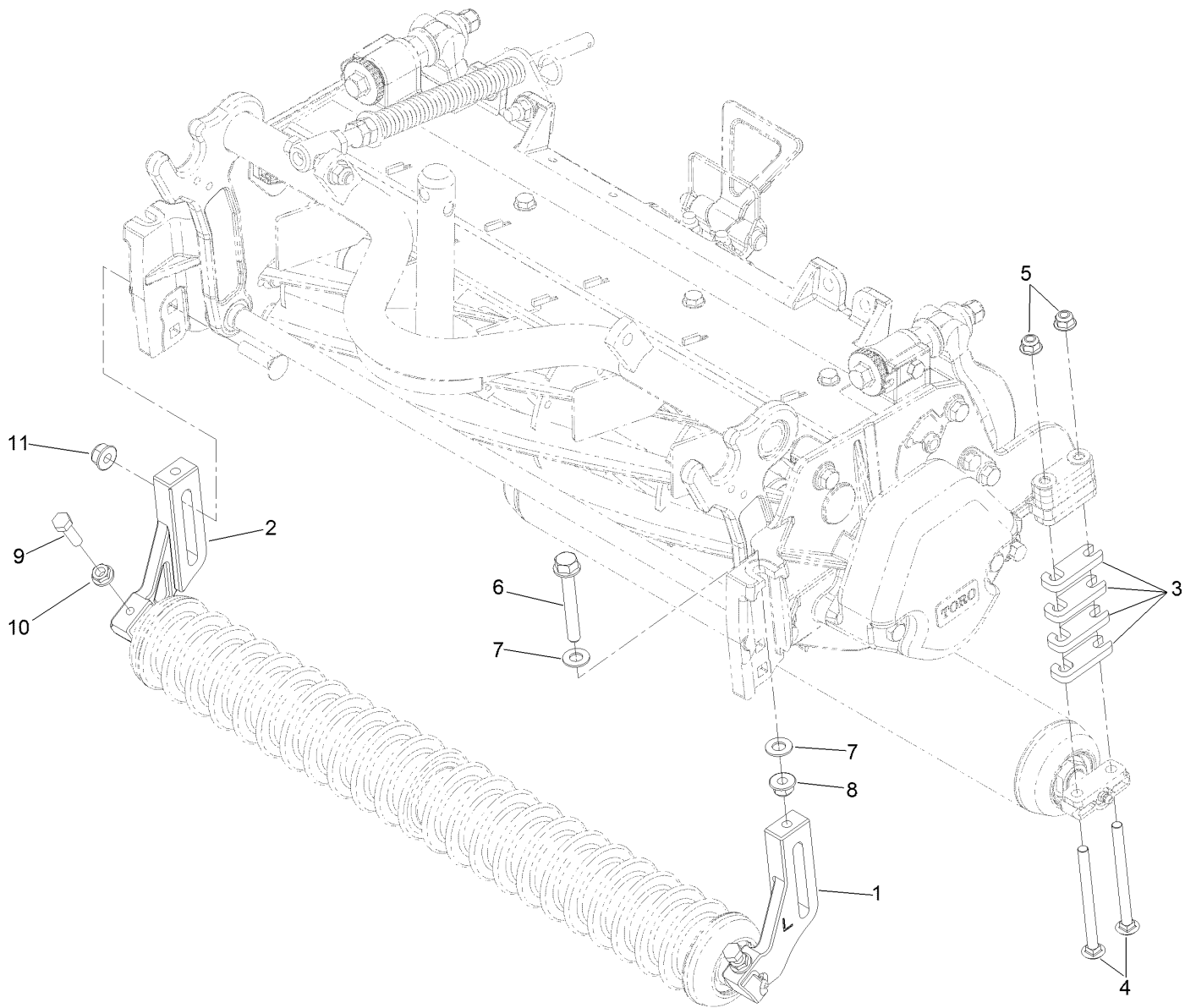
● Optional Equipment



Optional Plastic Shoulder Roller Assembly No. 114-5421

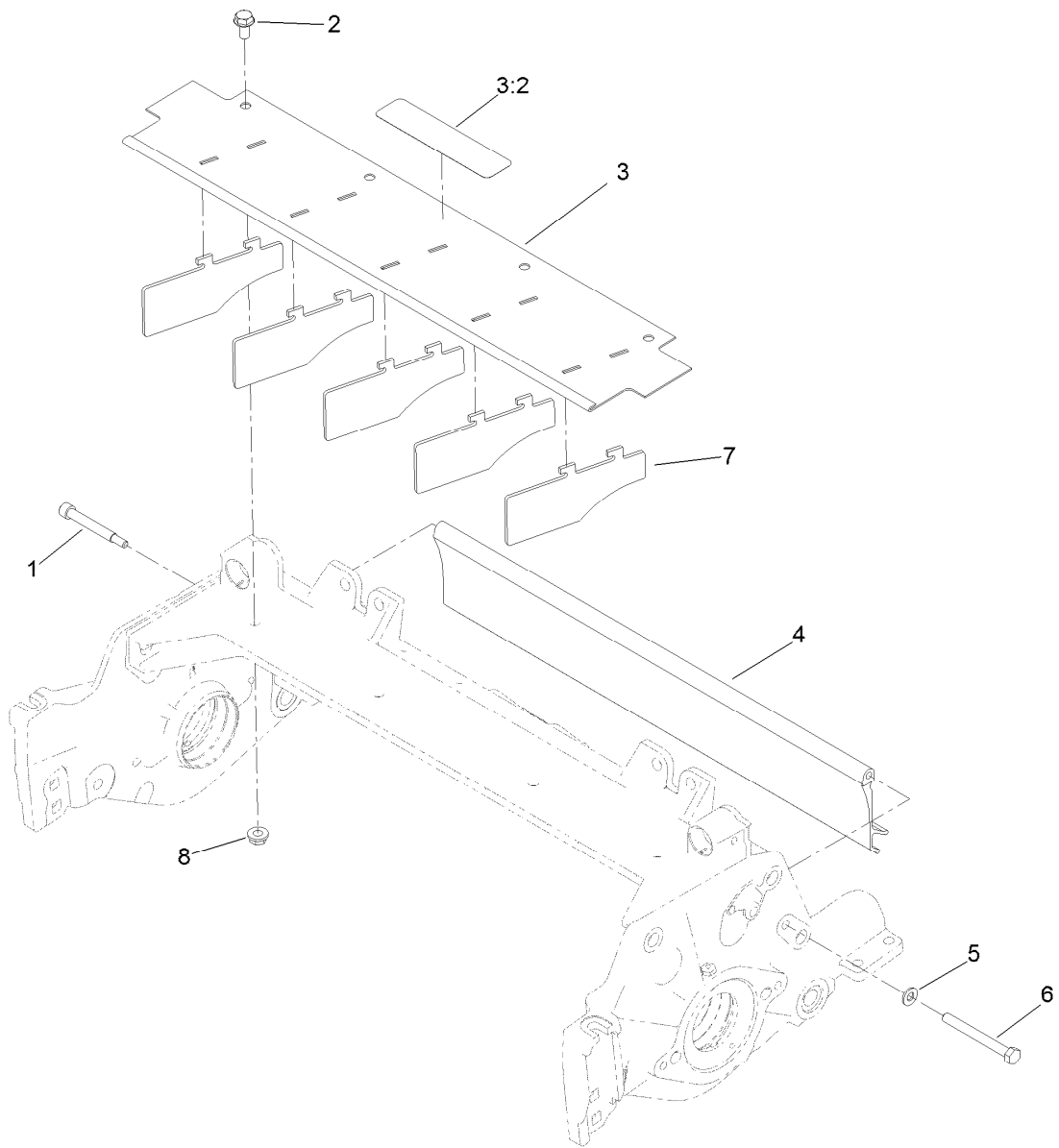
| <i>Ref.</i> | <i>Part Number</i> | <i>Qty.</i> | <i>Description</i> |
|-------------|--------------------|-------------|--------------------------|
| 1 | 114-5422 | 1 | Roller-Shoulder, Plastic |
| 2 | 114-5403 | 1 | Shaft-Roller, Front |
| 3 | 114-3717 | 2 | Seal-Oil |
| 4 | 112-5290 | 2 | Bearing-Steel, Stainless |
| 5 | 112-7494 | 4 | Seal |
| 6 | 114-5411 | 2 | Nut-Lock, Bearing |
| 7 | 302-5 | 2 | Fitting-Grease |
| 50 | 114-5430 | 1 | Roller Rebuild Kit ● |
| 50:1 | 114-3717 | 2 | Seal-Oil |
| 50:2 | 112-5290 | 2 | Bearing-Steel, Stainless |
| 50:3 | 112-7494 | 4 | Seal |
| 50:4 | 114-3745 | 2 | Nut-Lock, Bearing |

● Optional Equipment



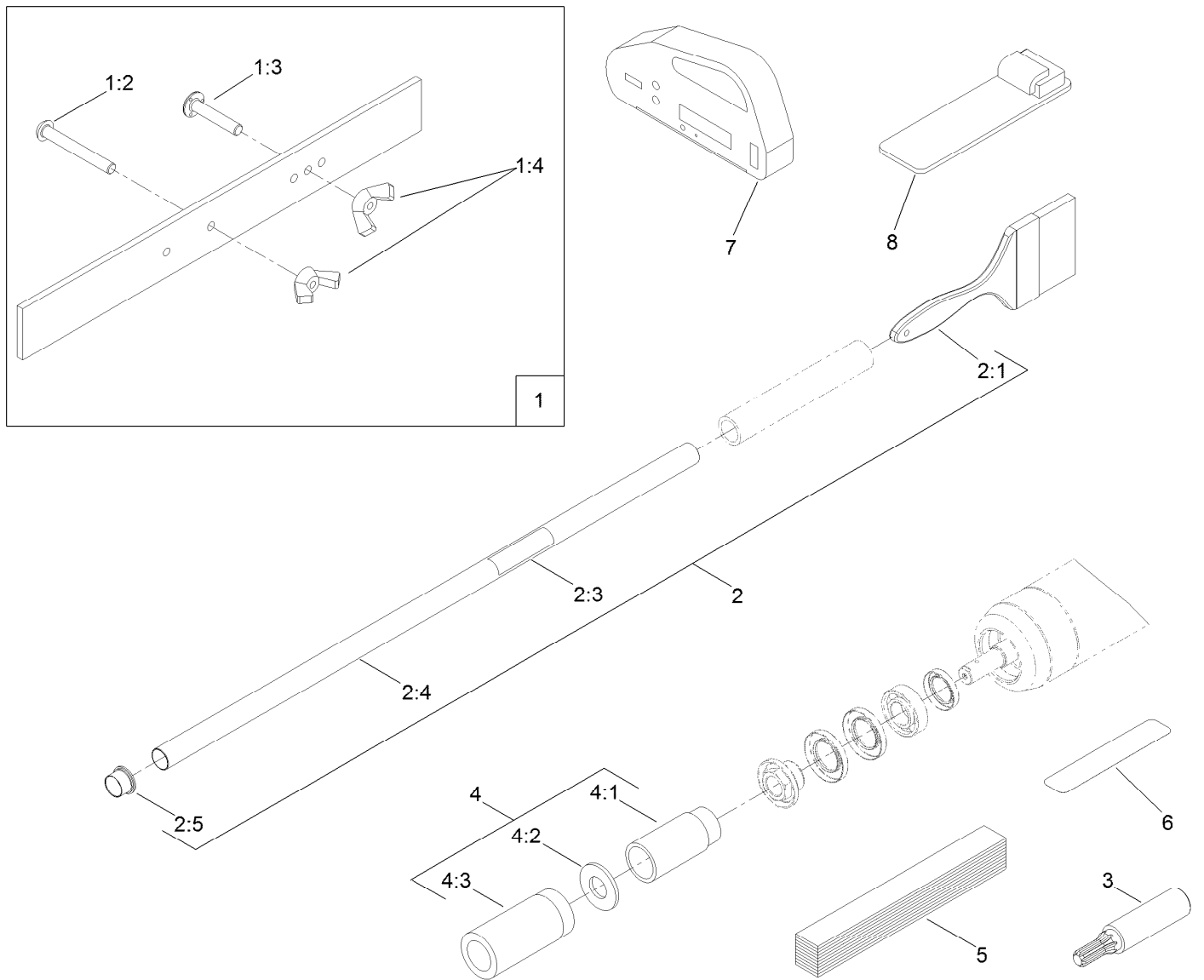
Optional High Height-of-Cut Assembly No. 137-0890

| <i>Ref.</i> | <i>Part Number</i> | <i>Qty.</i> | <i>Description</i> |
|-------------|--------------------|-------------|-----------------------|
| 1 | 120-0404 | 1 | Bracket-High HOC (LH) |
| 2 | 120-0405 | 1 | Bracket-High HOC (RH) |
| 3 | 119-0626 | 8 | Shim-Roller |
| 4 | 106-9758 | 4 | Screw-CARR |
| 4 | 3230-30 | 4 | Screw-CARR |
| 5 | 104-8300 | 4 | Nut-HF, NI |
| 6 | 133-7572 | 2 | Screw-HOC |
| 7 | 48-9220 | 4 | Washer-Plain |
| 8 | 104-8301 | 4 | Nut-HF, NI |
| 9 | 322-16 | 2 | Screw-HH |
| 10 | 32128-20 | 2 | Nut-HF |
| 11 | 133-7570 | 2 | Nut-Flange, NI |



Shield Assembly

| Ref. | Part Number | Qty. | Description |
|-------------|--------------------|-------------|------------------------|
| 1 | 107-7773 | 1 | Screw-HSH |
| 2 | 3234-7 | 4 | Screw-HHF |
| 3 | 107-2996 | 1 | Front Grass Shield ASM |
| 3:2 | 93-6688 | 1 | Decal-Danger |
| 4 | 125-1978 | 1 | Shield-Grass, Rear |
| 5 | 3256-74 | 1 | Washer-Flat |
| 6 | 322-14 | 1 | Screw-HH |
| 7 | 110-1706 | 5 | Deflector |
| 8 | 32128-20 | 4 | Nut-HF |



Optional Tools Assembly

| <i>Ref.</i> | <i>Part Number</i> | <i>Qty.</i> | <i>Description</i> | <i>Ref.</i> | <i>Part Number</i> | <i>Qty.</i> | <i>Description</i> |
|-------------|--------------------|-------------|----------------------|-------------|--------------------|-------------|-----------------------------|
| 1 | 108-6715 | 1 | Gauge Bar ASM | 3 | TOR4074 | 1 | Adapter-Drive, Reel ● |
| 1:2 | 32122-54 | 1 | Screw-Head, Truss | 4 | 115-0803 | 1 | Roller Rebuild Tool Kit |
| 1:3 | 108-6714 | 1 | Stud-Weld | 4:1 | 115-0852 | 1 | Tool-Inner Seal |
| 1:4 | 32103-3 | 2 | Nut-Wing | 4:2 | 107-8133 | 1 | Washer-Flat |
| 2 | 29-9100 | 1 | Brush And Handle ASM | 4:3 | 115-0853 | 1 | Tool-Bearing/Outer Seals |
| 2:1 | 36-4310 | 1 | Brush | 5 | 125-5610 | 1 | Paper-Reel, Toro (10 Pack) |
| 2:3 | 98-3206 | 1 | Decal | 6 | 125-5611 | 1 | Shim-Toro Reel (0.002 Inch) |
| 2:4 | 29-9080 | 1 | Handle | 7 | 131-6828 | 1 | Indicator-Angle |
| 2:5 | 2410-18 | 1 | Cap-Plastic | 8 | 131-6829 | 1 | Mount-Indicator, Angle |

● Obtain directly from K-Line Industries, Inc. (800) 241-0936

Attachments and Accessories

For 03638 8-Blade Radial Reel DPA Cutting Unit with 7in Reel Reelmaster 5010-H Series Traction Unit

| Product Name | Model/Part |
|---|-------------|
| Verticutter for 7 Inch Reel Cutting Unit | 03619 |
| 22in Fairway Flex Grass Basket Kit | 03415 |
| 22in Fairway Compact Grass Basket Kit..... | 03416 |
| Groomer Rod Kit..... | 131-6845 |
| Rear Roller Brush Kit (7 Inch Reel) | 03408 |
| Weight Kit for 8-Blade or 11-Blade DPA Cutting Unit with 7in Reel Traction Unit | 03405 |
| Rear Lift Cylinder Limit Kit | 110-9604 |
| Rear Roller Scraper Kit..... | 107-3280 |
| Wiehle Scraper ASM | 107-2993-03 |
| Comb/Scraper Kit | 110-1735 |
| 3 Inch Dia Full Front Roller ASM..... | 114-5412 |
| 3 Inch Full Front Roller Scraper | 110-9602-03 |
| Plastic Shoulder Roller ASM..... | 114-5421 |
| Shoulder Roller Scraper ASM..... | 110-9609-03 |
| High Height-of-Cut Kit, Reelmaster 3000 or 5000 Series DPA Cutting Unit | 137-0890 |
| 3 Inch Dia Collar Kit | 104-8215 |
| Cutting Unit Kickstand | 119-8010-03 |
| Reel Drive Adapter | TOR4074 |
| Roller Rebuild Tool Kit..... | 115-0803 |
| Brush-Roller (High Height-Of-Cut)..... | 110-1740 |
| 22in Rear Roller HD Brush | 137-0842 |
| Gauge Bar Assembly..... | 108-6715 |
| Roller Rebuild Kit..... | 114-5430 |
| Groomer/RRB Seal Kit..... | 131-3233 |
| Heavy-Duty DPA MVP Kit..... | 120-7230 |
| Rear Roller Adjustment Kit..... | 125-0570 |
| 7 Inch Aggressive Bedbar..... | 131-3221-03 |
| Toro Reel Paper (10 Pack)..... | 125-5610 |
| Toro Reel Shim (0.002in) | 125-5611 |
| Bedknife-Edgemax (Fairway) | 137-0833 |
| Bedknife-STD (Fairway) | 108-9096 |
| Bedknife-Edgemax Lowcut..... | 137-0832 |
| Bedknife-Low HOC (Fairway) | 110-4084 |
| Bedknife Edgemax Low cut Extended (Fairway)..... | 119-4280 |
| Bedknife-Lowcut Extended (Fairway) | 120-1640 |
| Bedknife-HD (Fairway) | 110-4074 |
| Angle Indicator..... | 131-6828 |
| Angle Indicator Mount..... | 131-6829 |
| EGDESERIES Reel+, 7-inch Fairway(22-inch)5 Blade Low Drag(Radial Reel) | 137-8444 |
| EGDESERIES Reel+ 7in Fairway(22in)8 Blade Low Drag (Radial Reel)..... | 137-8445 |
| Universal Groomer Drive Kit | 03768 |
| Universal Groomer Cartridge (22In)..... | 03765 |
| Grooming Brush for Units with Universal Groomer (22In) | 03767 |
| Broomer Kit (22In) | 132-7125 |
| Rear Roller Brush Kit for Units with 7in Reel and Universal Groomer | 03659 |

Attachments and Accessories (continued)

| | |
|--|----------|
| Weight Kit (for Universal Groomer only and Electric Reel motors)Universal Groomer | 03418 |
| Weight Kit (for Universal Groomer with RRB Kit and Electric Reel Motors) | 03419 |
| Universal Groomer Drive MVP Kit, Reelmaster 3575, 5010, and 5010-H Series 22-inch Cutting Units with 7 Inch Reel | 133-0151 |
| Rear Roller Brush MVP Kit, Reelmaster 5010-H Series 22-inch Cutting Unit with 7-inch Reel and Universal Groomer | 133-0154 |
| Rear Roller Brush MVP Kit, Reelmaster 5010-H Series Cutting Unit with 7 Inch Reel..... | 133-0158 |

Notes:

Notes:

Notes:



Count on it.