



Tri-Roller Kit
For Greensmaster® 3000 Series
Model No. 04495—200000001 and Up

Parts Catalog

Ordering Replacement Parts

To order replacement parts, please supply: the part number, the quantity, and the description of each part desired.

Understanding Reference Numbers

Each identified part in an illustration has a reference number. The reference number for a part also appears in the parts list, along with other information about the part.

This catalog uses two special reference number formats, one to indicate parts in a service assembly and another to indicate the quantity of a given part in an illustration.

Service Assembly Reference Numbers

Parts in service assemblies have reference numbers in the form **a:b**. The **a** represents the reference number of the entire service assembly and the **b** represents a sequential number unique to each part within the service assembly.

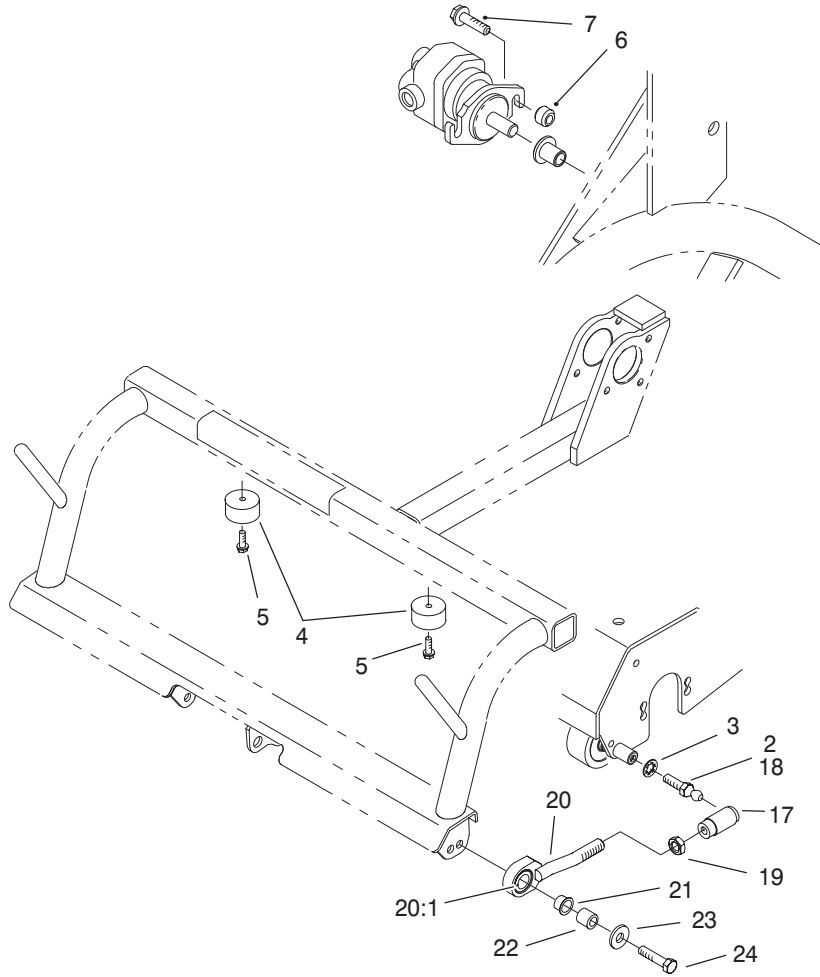
For example, a wheel assembly might be identified by reference number **6**, the tire by **6:1**, the valve by **6:2**, and the wheel by **6:3**. When you order the assembly identified by reference number **6**, you receive all parts identified by reference numbers **6:1**, **6:2**, and **6:3**. However, you may also order any part individually.

Reference numbers of this type appear in illustrations and in part lists.

Reference Numbers Indicating Quantity

In an illustration, if a reference number indicates more than one part, the reference number has the form **nX y**. The **n** represents the quantity of the part, the **X** is the multiplication symbol, and the **y** represents the reference number.

For example, in an illustration, the reference number **2X 37** means that two of the parts identified by reference number **37** are indicated.



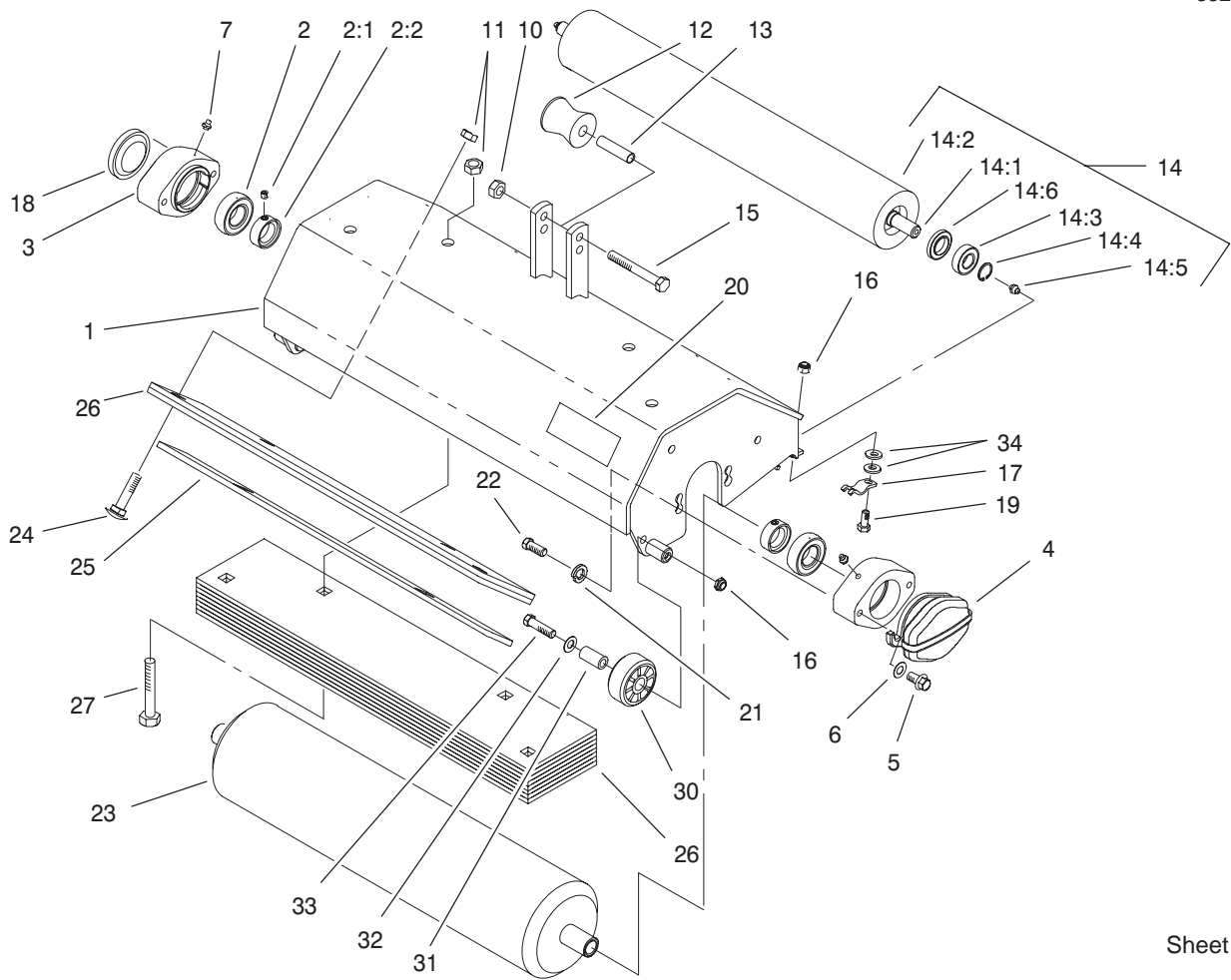
Sheet No.:0
T-3464

Tri-Roller Mounting Assembly (3200 Shown)

Ref. No.	Part No.	Qty.	Description
*1	99-1603	3	Tri-Roller ASM
2	94-2958	6	Stud-Ball (Greensmaster 3050 & 3100)
3	3254-6	6	Washer-Lock, Internal
4	94-4548	6	Bumper-Recessed
5	32144-44	6	Screw
6	61-2370	1	Spacer (Greensmaster 3050 & 3100)
7	32144-102	1	Screw-HWH (Greensmaster 3050 & 3100)
*8	3256-24	2	Washer-Flat (Greensmaster 3050 & 3100)
*9	95-1642-01	1	Weight - Counter (Greenmaster 3050 & 3100)
17	54-7460	6	Ball Joint
18	54-7430	6	Stud - Ball
19	3220-5	6	Nut-Hex Jam
20	18-3049	6	Pull Link ASM
20:1	95-0532	1	Bushing ASM - Rubber
21	256-292	6	Bushing-Flange, NI
22	75-5270	6	Spacer-Seat Knob

Ref. No.	Part No.	Qty.	Description
23	3256-4	6	Washer-Flat
24	3211-6	6	Screw-HH

* Not illustrated



Sheet No.:A1

Tri-Roller Assembly No. 99-1603

Ref. No.	Part No.	Qty.	Description	Ref. No.	Part No.	Qty.	Description
1	99-1605-01	1	Frame ASM	20	67-1300	1	Decal – Toro
2	94-3405	2	Bearing–Ball	21	48-9590	4	Washer–Lock
2:1	3245-35	6	Screw – Set	22	33115-025	4	Screw–HH
2:2	251-77	6	Collar – Lock	23	99-1614	1	Roller ASM
3	95-7148	2	Housing – Bearing	24	33126-040	4	Screw–CARR
4	95-1642-01	1	Weight – Counter	25	99-1637-01	1	Plate – Scraper
5	93-2569	4	Screw–HHF	26	99-1620-01	9	Plate – Weight, Long
6	3256-24	2	Washer–Flat	27	33116-070	2	Screw–HH
7	302-5	2	Fitting–Lube	30	99-1638	2	Roller – Plastic
10	33025-00	1	Nut–Lock, NI	31	51-3640	2	Sleeve–Pivot, Idler
11	33026-00	6	Nut–Lock, NI	32	3256-3	2	Washer–Flat
12	93-2463	1	Roller – Lift	33	33114-050	2	Screw–HH
13	93-2464	1	Spacer – Roller	34	3256-74	4	Washer–flat
14	99-1615	1	Rear Roller ASM				
14:1	93-2466	1	Shaft – Roller				
14:2	99-1616	1	Tube ASM – Rear Roller				
14:3	93-2559	2	Bearing – Ball				
14:4	93-2525	2	Ring – Retaining				
14:5	302-5	2	Fitting–Lube				
14:6	98-2194	2	Sleeve – Grease				
15	33115-080	1	Screw–HH				
16	33024-00	4	Nut–Lock, NI				
17	99-8168	2	Collar–HOC				
18	2410-30	1	Cap–Plastic				
19	33114-025	2	Screw–HH				

