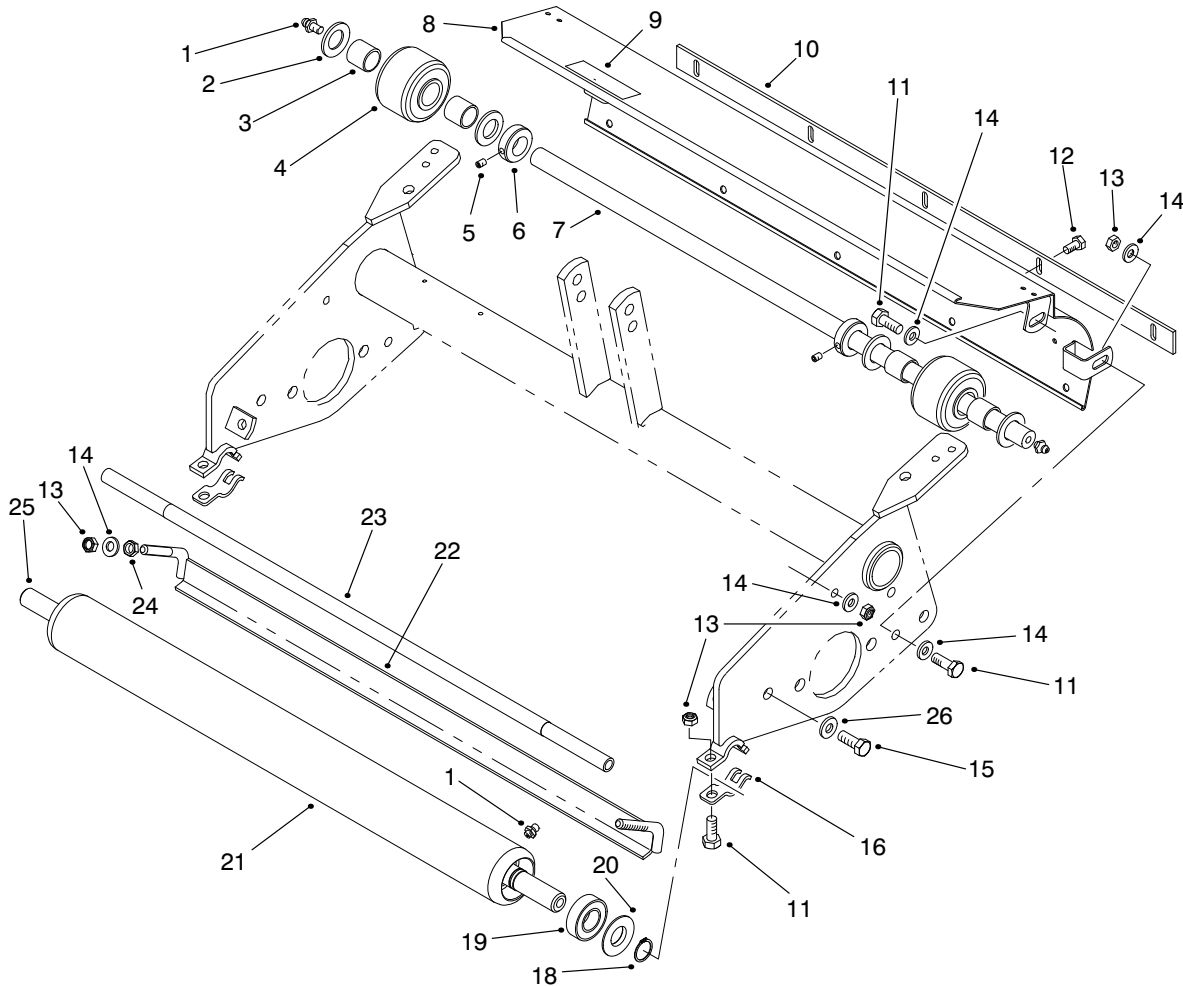




**MODEL NO. 04493-90461 & UP**

**PARTS CATALOG**

**DETHATCHER KIT**  
**FOR GREENSMASTER® 3000 SERIES**

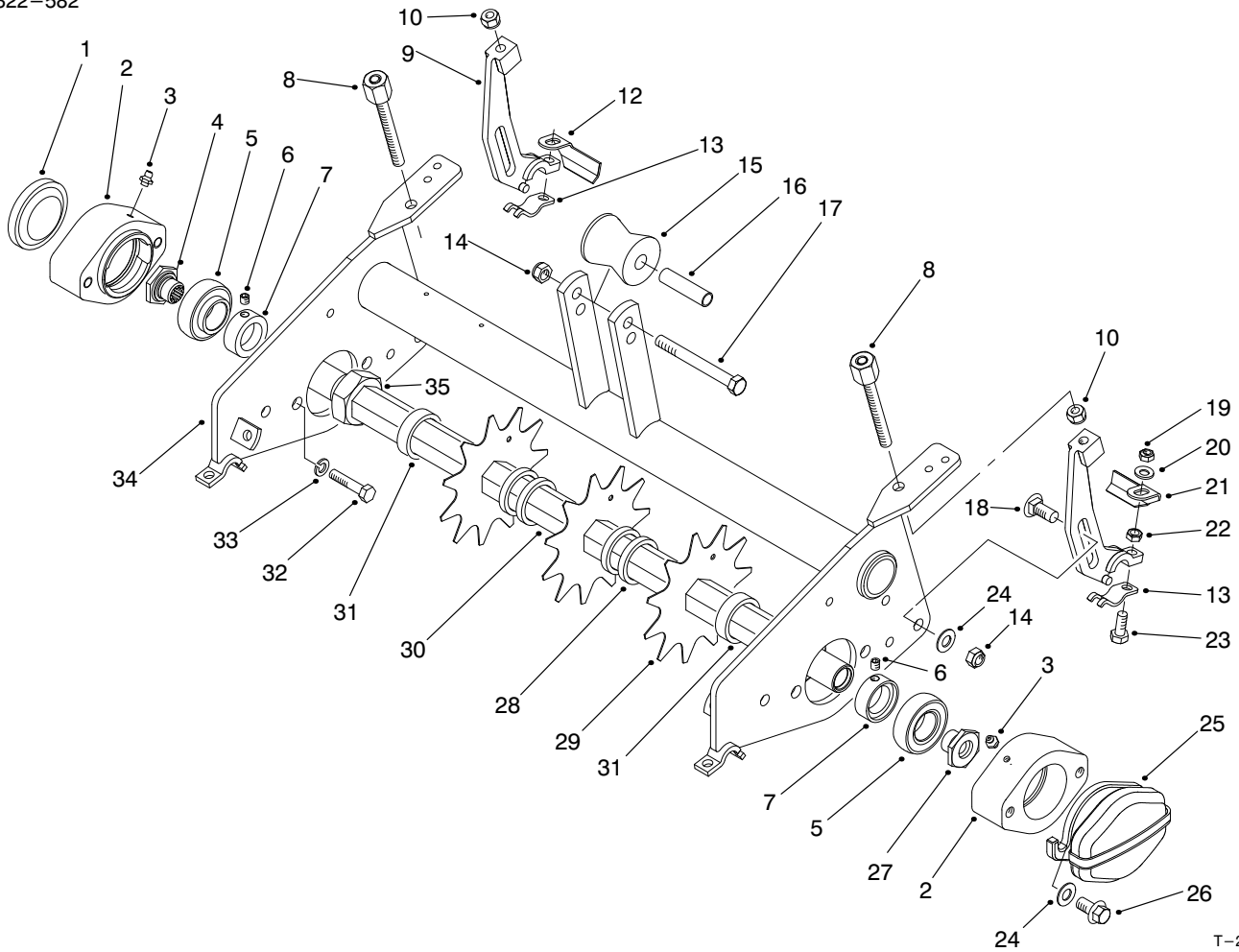


T-2783-1

**ROLLER ASSEMBLY**

Ref. No.	Part No.	Description	No. Used
1	302-5	Fitting-Grease	4
2	257-11	Washer-Thrust	4
3	95-7497	Bushing-Wheel	4
4	94-9211	ASM-Wheel	2
5	3245-1	Screw-Set	2
6	94-9213	Collar-Shaft (Incl. Ref. #5)	2
7	94-9210	Shaft-Wheel, Rear	1
8	98-3551	ASM-Shield, Grass	1
9	67-7960	Decal-Danger, Reel	1
10	36-7260	Bar-Cutoff	1
11	33114-020	Screw-HH	6
12	32144-73	Screw-HHUTF	5
13	33024-00	Nut-Lock	8

Ref. No.	Part No.	Description	No. Used
14	3256-74	Washer-Flat	10
15	33115-020	Screw-HHF	2
16	99-8168	Collar-Height-of-Cut	2
18	32151-12	Ring-Retaining	2
19	85-9970	ASM-Bearing	2
20	85-7190	Washer-Shield	2
21	95-5943	ASM-Rear Roller (Incl. Ref. #1, 18-20 & 25)	1
22	94-9226	Bracket-Scrapper	1
23	98-2196	Rod-Shield	1
24	33014-00	Nut-Hex.	2
25	95-5946	Shaft-Roller	1
26	3256-24	Washer-Flat	2



T-2731-3

## FRAME ASSEMBLY

Ref. No.	Part No.	Description	No. Used
1	2410-30	Cap-Plastic	1
2	95-7148	Housing-Bearing	2
3	302-5	Fitting-Grease	2
4	93-1394	Nut-Spline	1
5	251-337	Bearing-Ball	2
6	3245-35	Screw-Set	2
7	251-77	Collar-Lock	2
8	95-1633	ASM-Adjustment (Height-of-Cut)	2
9	95-1638	Bracket-Height-of-Cut Adjustment, Rear	2
10	3296-5	Nut-Lock	2
12	94-9219	Scraper-Roller, Right	1
13	99-8168	Collar-Height-of-Cut	2
14	33025-00	Nut-Lock	3
15	93-2463	Roller-Lift	1
16	93-2464	Spacer-Roller	1
17	33115-080	Screw-HH	1
18	33125-030	Screw-CARR	2
19	33024-00	Nut-Lock	2
20	3256-74	Washer-Flat	2
21	94-9220	Scraper-Roller, Left	1

Ref. No.	Part No.	Description	No. Used
22	33014-00	Nut-Hex.	2
23	33114-030	Screw-HH	2
24	3256-24	Washer-Flat	4
25	95-1642	Weight-Counter	1
26	93-2569	Screw-HHF	4
27	94-9214	Nut-Spline, LH	1
28	17-1600	Spacer	72
29	17-1590	Blade-Eleven Tooth	37
30	94-9202	Shaft-Dethatcher	1
31	17-1580	Spacer	2
32	33115-025	Screw-HH	4
33	48-9590	Washer-Lock	4
34	98-3587	Frame-Dethatcher	1
35	3220-18	Nut-Jam	2
*	94-9201	ASM-Shaft, Dethatcher (Incl. Ref. #28-31 & 35)	1
*	94-3405	ASM-Bearing (Incl. Ref. #5-7)	2
*	99-8189	Plate-Gauge .060	4
*	99-8188	Plate-Gauge .120	4
*	99-8187	Plate-Gauge .250	4

\*Not Illustrated